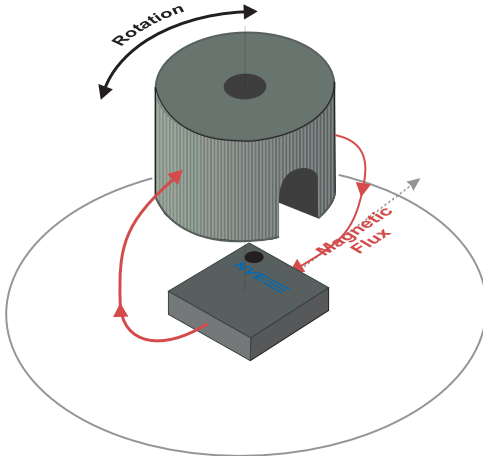


## ASR002 Smart TMR Angle Sensor



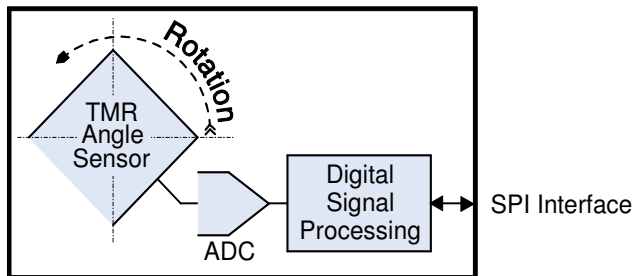
### Features

- Measure rotational speeds to 375,000 RPM
- SPI (four-wire) interface
- Robust airgap and misalignment tolerances
- Factory calibrated
- 3.3 volt or 5 volt compatible digital interface
- Ultraminiature 2.5 x 2.5x 0.8mm TDFN package

### Key Specifications

- 0.1° resolution
- ±0.2° repeatability
- Robust 60 to 200 Oe magnetic field operating range
- Fast 12.5 kSps sample rate
- Flexible 2.2 to 3.6 V supply range
- Low 4 mA typical supply current
- Wide -40°C to +125°C operating range

### Block Diagram



### Applications

- Rotary encoders
- Automotive applications
- Motor control
- Internet of Things (IoT) end nodes

### Description

ASR002 TMR Smart Angle Sensors provide a precise digital angle measurement over a wide range of speeds.

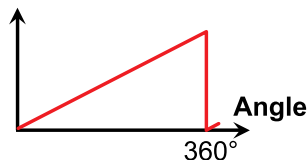
The sensor combines a precise, low-power Tunneling Magnetoresistance (TMR) sensor with sophisticated digital signal processing.

The sensor is factory calibrated, with coefficients stored in internal memory.

A four-wire SPI interface provides angle data and allows setting device parameters.

The ASR002 is designed for harsh industrial or automotive environments with ESD protection, and full -40°C to +125°C operating temperature range.

### Transfer Function



## Boundary Ratings

---

Parameter	Min.	Max.	Units
Supply voltage	-12	4.2	Volts
Input and output voltages (MISO, MOSI, SS, SCLK)	-0.5	$V_{cc}+2.5$ up to 5.8	Volts
Storage temperature	-55	150	°C
ESD (Human Body Model)		2000	Volts
Applied magnetic field		Unlimited	Oe

## Operating Specifications ( $T_{min}$ to $T_{max}$ : $2.2 < V_{DD} < 3.6$ V unless otherwise stated)

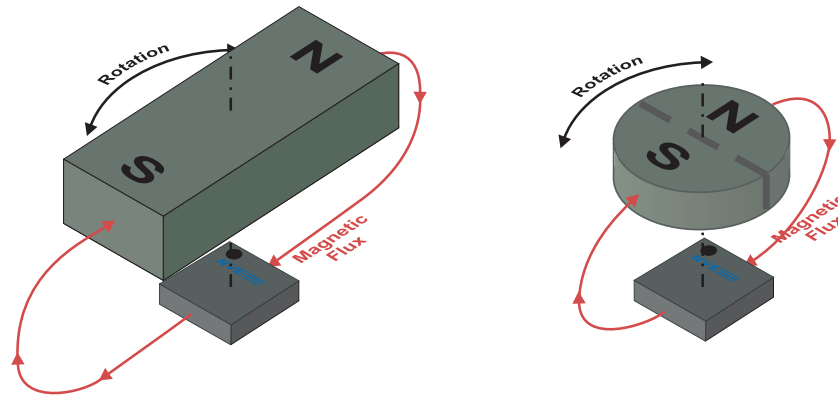
Parameter	Symbol	Min.	Typ.	Max.	Units	Test Condition	
Operating temperature	$T_{min}; T_{max}$	-40		125	°C		
Supply voltage	$V_{DD}$	2.2		3.6	V		
Supply current	$I_{DD}$		4	6	mA	max. at $V_{DD} = 3.6$ V	
Power-on Reset supply voltage	$V_{POR}$		1.4		V		
Brown-out power supply voltage	$V_{BOR}$	0.75	1	1.36	V		
Start-up time	$T_{STA}$		1		ms		
<b>Magnetics</b>							
Applied magnetic field strength	H	60		200	Oe		
<b>Accuracy and Repeatability</b>							
Angular resolution	$\delta$		0.1		Angular Degrees	fixed temperature and bias <sup>1</sup>	
Angular hysteresis	$\square$			0.1			
Repeatability			$\pm 0.2$				
Angular accuracy, fixed bias <sup>1</sup>	$\epsilon$			$\pm 2$ $\pm 3$			
Angular accuracy, variable bias <sup>2</sup>				$\pm 6$ $\pm 6$			
<b>Speed</b>							
Sample rate			12.5		kSps		
<b>SPI Bus Characteristics</b>							
Bus voltage	$V_{BUS}$	2.2		5.5	V		
Low level input threshold voltage	$V_{IL}$	0.8			V		
High level input threshold voltage	$V_{IH}$			2.2	V		
Low level output current	$I_{OL}$	3		mA		$V_{OL} = 0.4$ V	
I/O capacitance	$C_{I/O}$			10	pF		
<b>SPI Setup and Hold Timing</b>							
Data transfer rate	DR			2.5	Mbits/s	full duplex	
SCLK Rise time	$t_R$				ns	See figure 7	
SCLK fall time	$t_F$				ns		
SCLK low time	$t_{CL}$	200			ns		
SCLK fall time	$t_{CH}$	200			ns		
SS to SCLK setup	$t_{SE}$	80			ns		
SCLK to MISO valid	$t_{SDD}$			170	ns		
SS to MISO tri-state	$t_{SDZ}$			170	ns		
SCLK to MOSI hold time	$t_{SDH}$	80			ns		
MOSI to SCLK setup	$t_{SDS}$	80			ns		
SCLK to SS hold time	$t_{SH}$	80			ns		
SS to MISO valid	$t_{SEZ}$			170	ns		
<b>RAM Timing</b>							
Address setup time	$t_{ADDR}$			10	$\mu$ s		See figure 4
Data read time	$t_{READ}$			20	$\mu$ s		
<b>Nonvolatile Memory Characteristics</b>							
Address setup time	$t_{ADDR}$			3	$\mu$ s	See figure 5	
Data read time	$t_{READ}$			10	$\mu$ s		
Data write time	$t_{NVM}$			20	ms		
Endurance			10000		Cycles		
<b>Package Thermal Characteristics</b>							
Junction-to-ambient thermal resistance	$\theta_{JA}$		320		°C/W		
Package power dissipation			500		mW		

### Specification Notes:

1. “Fixed Bias” means a fixed airgap within between the bias magnet and sensor so the magnitude of the magnetic field at the sensor is constant within the specified field range of the parts. The highest accuracy is obtained using fields closest to factory calibration.
2. “Variable Bias” means the magnitude of the magnetic field at the sensor can vary across the entire specification range.

**ASR002 Overview**

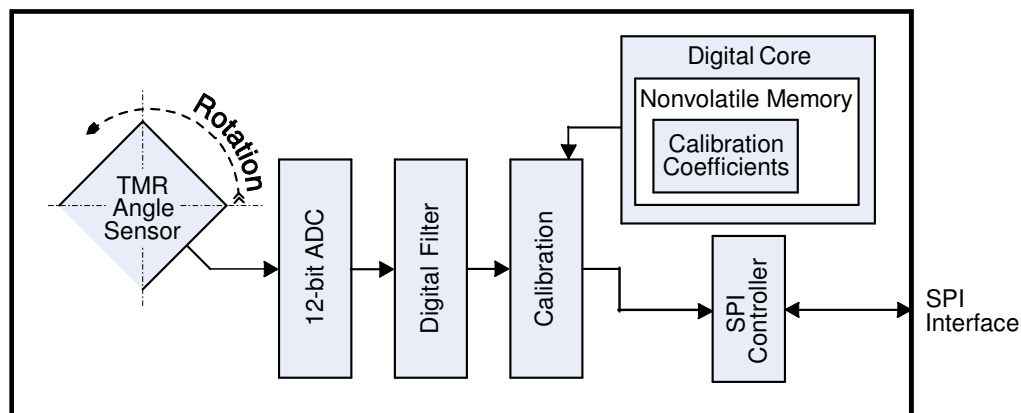
The ASR002 is a non-contact angle sensor designed for high speed applications where size is limited. The heart of the ASR002 is a tunneling magnetoresistive (TMR) sensor. In a typical configuration, an external magnet provides a magnetic field of 30 to 200 Oe in the plane of the sensor, as illustrated below for a bar magnet and a radially-magnetized disk magnet. Factory-programmed signal conditioning is combined with a temperature sensor and digital linearization to produce high speed, accuracy, and precision in a tiny 2.5 x 2.5 mm TDFN package.



**Figure 1. Sensor operation.**

**ASR002 Operation**

A detailed block diagram is shown below:



**Figure 2. Detailed block diagram.**

**TMR Angle Sensor Element**

ASR002 sensors use unique TMR sensor elements that are inherently high speed and low noise. The digital core calculates the angle from sensor element Sine and Cosine vectors, and the raw sensor data are available from separate memory locations.

**ADC**

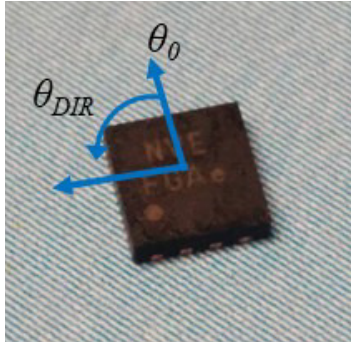
The sensor output is digitized with a 12-bit ADC. The extra bits ensure precision and computational accuracy.

**Digital Filter**

A first-order Infinite Impulse Response (IIR) digital filter with a programmable cutoff frequency can be used for ultralow noise if high-frequency operation is required. The factory default is the filter turned off.

**Rotation Direction**

The ASR002 can provide increasing angle values for either clockwise or counterclockwise field rotations. Counterclockwise is defined as a rotating field vector through pins 1-3-4-6, and clockwise through pins 1-6-4-3. The rotation direction can be programmed using the  $\theta_{DIR}$  parameter.



**Figure 3. Zero-angle reference ( $\theta_0$ ) and rotation direction ( $\theta_{DIR}$ ). The rotational center of the sensor is the package center.**

**Zero-Angle Reference Point**

A programmable parameter  $\theta_0$  sets the zero-degree reference or angular offset. This is the angle of “discontinuity,” that is, where the angle output changes from 360° to 0°. The default  $\theta_0$  value is zero for magnetic fields pointing from pin 1 to pin 6.

**Direction and Hysteresis**

The Direction output indicates direction of rotation. A hysteresis setting can be changed to prevent small changes from causing the Direction output to “chatter,” especially at low speed.

**Digital Filter**

The digital filter is an Infinite impulse response (IIR) weighted running average filter, which can reduce mechanical and electrical noise depending on the required speed.

The filtered output is calculated as follows:

$$\theta_n = \theta/m + [(m-1)/m]\theta_{n-1}$$

Where  $\theta$  = is the measured angle;  $\theta_n$  = the filtered angle;  $\theta_{n-1}$  is the previous value of the filtered angle; and  $m$  is a constant that determines the cutoff frequency as follows:

$$f_{CUTOFF} = f_{SAMPLE}/(2\pi m)$$

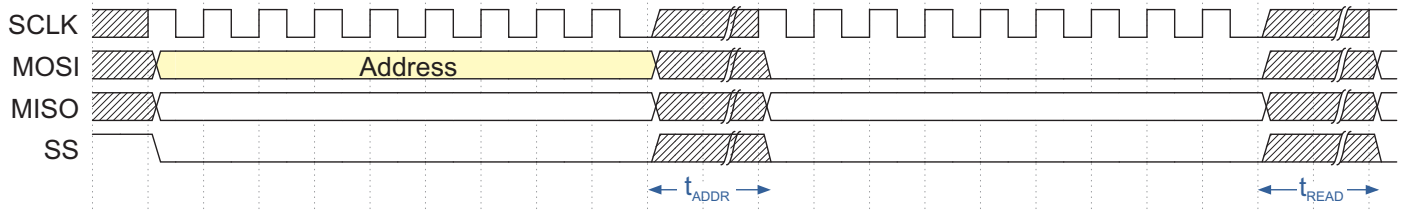
Where  $f_{CUTOFF}$  is the filter cutoff frequency and  $f_{SAMPLE}$  is the sensor ADC sampling rate (approximately 12500/s). So for example, if  $m = 10$ , the cutoff frequency is approximately 200 Hz.

$m = 1$  disables filter so the output is simply updated with each sample.

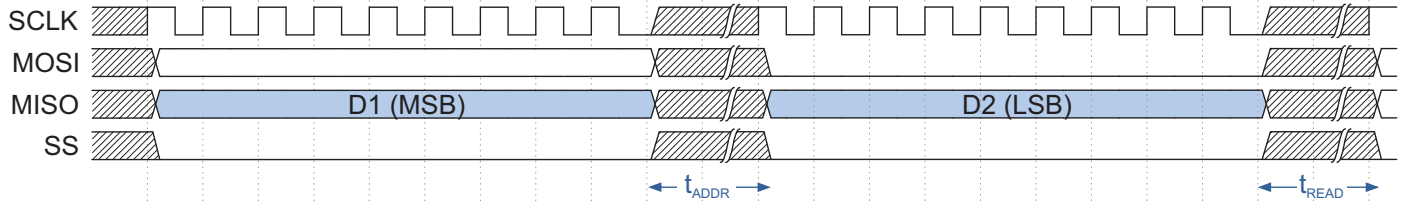
**A Simple SPI Interface**

The SPI interface is an industry standard full-duplex 2.5 megabit per second connection with the sensor as the slave to an external master such as a microcontroller. SPI data (MOSI and MISO) and the Clock (SCLK) are 2.2 volt to five-volt compliant. The digital angle is the default two byte response.

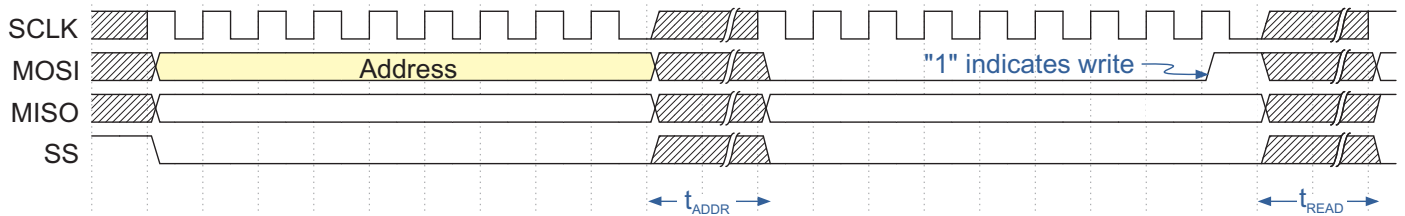
The ASR002 uses an industry-standard “Mode 0” interface (data is sampled at the leading rising edge of the clock; CPOL=0 and CPHA=0). In accordance with industry standards, slave select (SS) is active-low, and bit order and byte order are from MSB to LSB. Details are shown in the following diagrams:



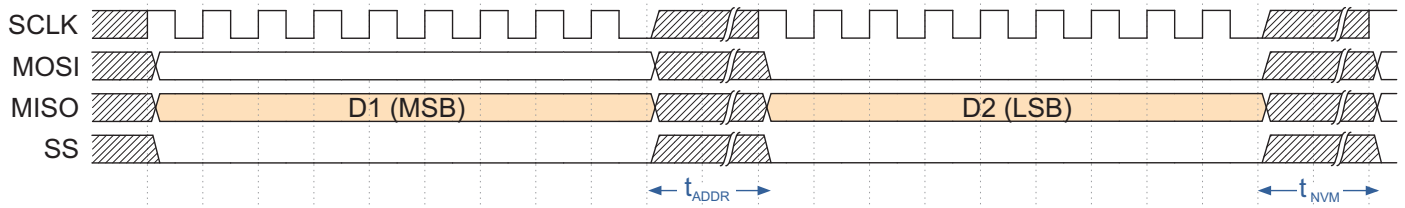
**Figure 4a. Sending the address for a read.**



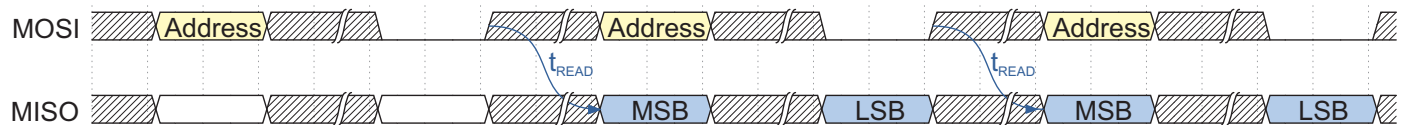
**Figure 4b. Reading data.**



**Figure 5a. Sending the address for a write.**

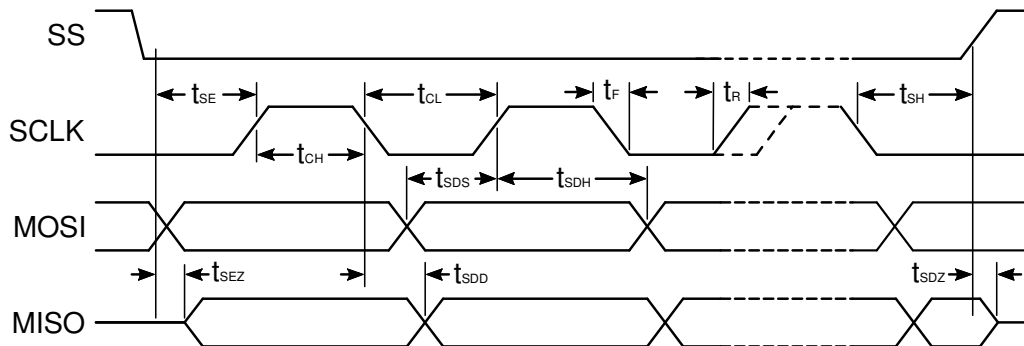


**Figure 5b. Writing data.**



**Figure 6. Continuous read.**

SPI setup and hold timing constraints are shown in Figure 7:



**Figure 7. SPI setup and hold timing.**

A schematic of a typical interface to a 3.3-volt or five-volt microcontroller is shown in the Applications section.

### **Unique Architecture**

The ASR002 uses a unique “Von Neumann” architecture where all data and parameters are written and read from memory. This eliminates the need for explicit commands. In addition, all data and coefficients are two bytes, which dramatically simplifies firmware, streamlines system development, and allows high-speed communication over a simple two-wire I<sup>2</sup>C interface.

### **Straightforward Reading and Writing**

All reads and writes are initiated by the master pulling the SS “LOW” and sending an eight-bit address to the ASR002 plus a second byte. The least significant bit of the second address byte indicates whether the address request is for a read or a write (“0” is a read; “1” is a write). The slave responds with two bytes of data.

As shown in figures 4 and 5, and the specification table, a 3 μs delay ( $t_{ADDR}$ ) is needed between address bytes; 10 μs ( $t_{READ}$ ) should be allowed before data can be read, and 20 ms ( $t_{NVM}$ ) should be allowed for writing parameters to the nonvolatile memory.

The angle is stored in Address 0 of the sensor, and reading the angle is a simple two-byte sequence. The master writes the two zero bytes for the “0” angle address, and reads the two-byte angle, which is expressed in tenths of degrees. This can be repeated to continuously read the angle as shown in Figure 6.



## Memory Map

The ASR002 memory provides access to angle data and user-programmable parameters. The memory is accessed via SPI as described in the SPI interface section.

Parameter	Symbol	Default	Read/Write	Range	Address	Description
<b>Data</b>						
Angle	$\theta$	N/A	R	0 – 3600	0x00	In tenths of a degree
Raw Sin Vector	$\text{Sin}\theta$			Approx. 1500 – 2500	0x01	Raw outputs centered at approx. 2048 with peak-peak amplitudes of approx. 1000.
Raw Cos Vector	$\text{Cos}\theta$				0x02	
Direction	Dir			0 – 1	0x03	0 = decreasing angle 1 = increasing angle
<b>User-Programmable Parameters</b>						
Rotation Direction	$\theta_{\text{DIR}}$	0	R/W	0 – 1	0x40 [bit 0]	0 → increasing CCW; 1 → increasing CW (see Fig. 3)
Angular Offset	$\theta_0$	0		0 – 3600	0x41 [bits 13:0]	Point at which angle is zero (see Fig. 3)
Digital Filter Constant	m	0		1 – 255	0x42	$f_{\text{CUTOFF}} = f_{\text{SAMPLE}} / (2\pi m)$ ; $f_{\text{SAMPLE}} = \text{approx. } 12.5 \text{ kSps}$ m = 1 disables filter
Direction Hysteresis	$\delta_{\text{DIR}}$	25		0 – 255 (0 – 25.5°)	0x43	Hysteresis of the “Dir” output; in tenths of a degree
<b>Read-Only Memory</b>						
Lot code			R		0x80 – 0x85	Date code in ASCII; right-most character in address 80; left-most in address 85; format YYWWXX, where YY = year; WW = work week; XX = internal code.

**Table 1. ASR002 Memory Locations.**

### **Power-Up and Initialization**

---

#### ***Absolute position***

Unlike some encoder types, ASR002 sensors detect absolute position and maintain position information when the power is removed. The sensor powers up indicating the correct position.

#### ***Nonvolatile parameters***

All parameters are nonvolatile so they can be set once (via SPI), and remain for the life of the product if desired.

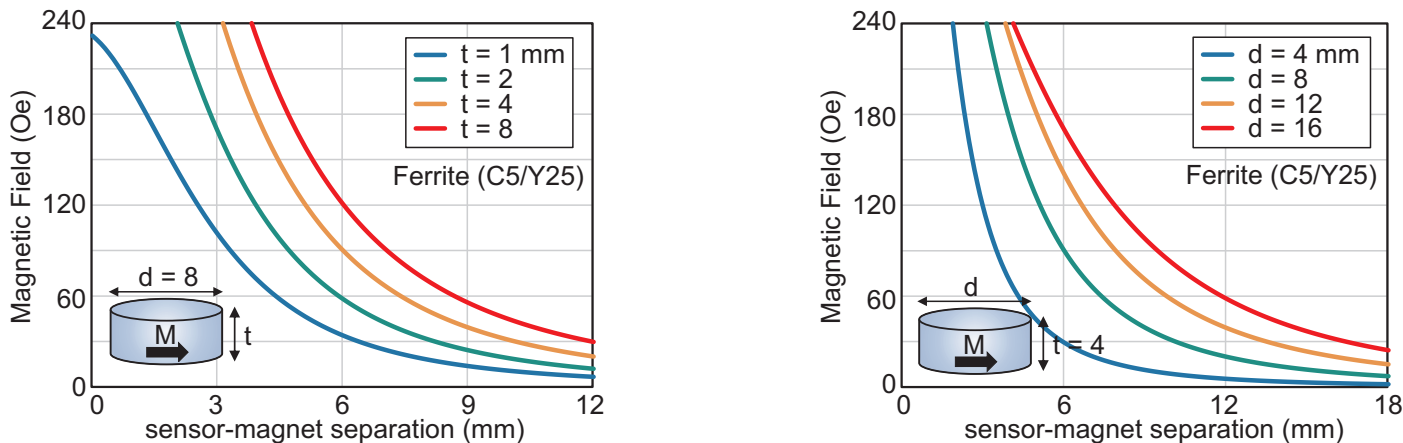
### **Supply Decoupling**

---

$V_{DD}$  should be bypassed with a 0.1 $\mu$ F capacitor (preferably nonmagnetic), placed as close as possible to the sensor pads. Inadequate bypassing can cause noise or anomalous device behavior.

**Magnet Selection**

The sensor operates with as little as a 30 Oe magnetic field, and is accurate up to 200 Oe. This wide magnetic field range allows inexpensive magnets and operation over a wide range of magnet spacing. Larger or stronger magnets require more distance to avoid oversaturating the sensor; smaller or weaker magnets may require closer spacing. Low-cost, diametrically-magnetized ferrite disk magnets can be used with these sensors. Bar magnets can also be used in some configurations. This allows greater flexibility with mechanical construction and miniaturization of the system. The figures below show the magnetic field for various magnet geometries and different distances between the sensor and an inexpensive C5/Y25 grade ferrite magnet.

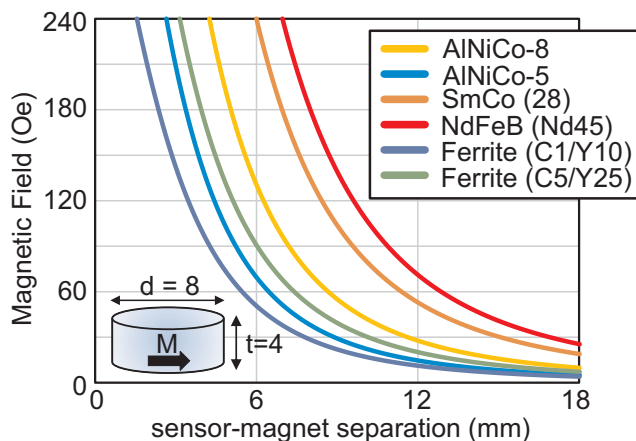


**Figure 8. Magnetic fields for various geometries of C5/Y25 ferrite magnets plotted for the distance between the magnet and sensor. Magnets with 8 mm diameter and various thicknesses are shown at left. Four millimeter magnets of various diameters are shown at right.**

Smaller magnets produce larger field gradients as shown in Fig. 8. Variations in magnetic field over the operating position of the sensor can reduce accuracy. Maximizing the magnet size within the mechanical constraints of the system is recommended for highest accuracy.

Trial ferrite magnets are available with NVE’s demonstration kits. Other materials and geometries are available to suit high-temperature applications or even larger magnet-sensor separations. Contact NVE [customer support](#) for recommendations on magnet material. [NVE’s Online Store](#) also stocks compatible magnets.

The graph below shows how magnet size can be reduced by using alternative magnet materials:

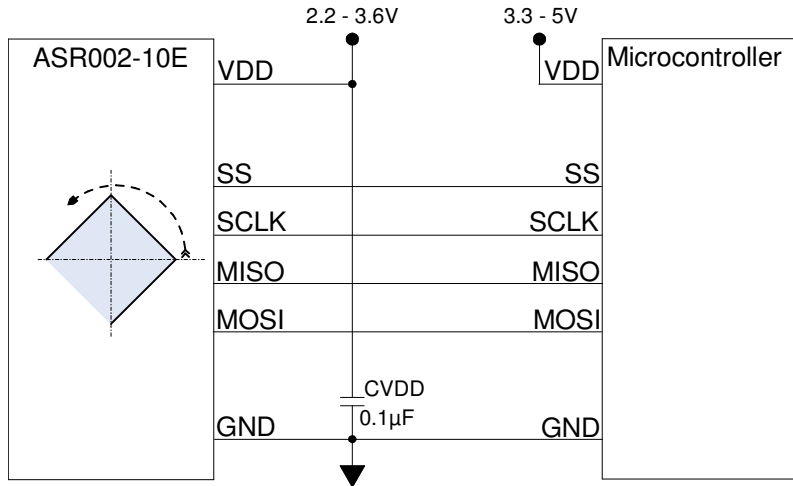


**Figure 9. Magnetic fields from an 8 millimeter diameter, 4 millimeter thick magnet for increasing magnet-sensor separation. NdFeB materials produce the largest magnetic fields and separations. SmCo and AlNiCo materials offer the highest operating temperatures. Ferrite magnets are the most cost-effective.**

**Application Circuits**

**Typical Microcontrollers Interface**

A typical microcontroller interface is shown below:

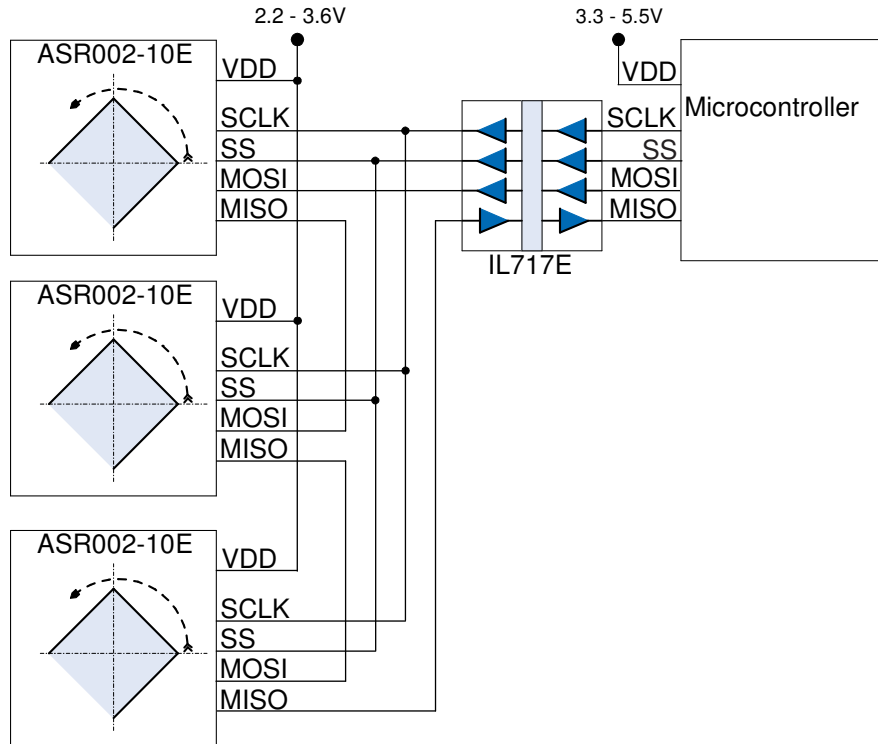


**Figure 10. Typical microcontroller interface.**

The ASR002 is configured as a Slave and the microcontroller should be configured as the Master. The ASR002 SPI interface is compatible with 3.3 or five-volt microcontrollers.

***Daisy Chaining Multiple Sensors with Isolated Microcontroller***

Multiple ASR002's can be configured on the same data and select bus. The configuration below shows three sensors connector to a microcontroller master through a single IL717E isolated data coupler. This mode of selection works with factory-default sensors without having to reset addresses for different sensors and provides isolation with a minimal number of components.



**Figure 11. Daisy-chaining multiple sensors with an isolated microcontroller.**

## Illustrative Arduino Code

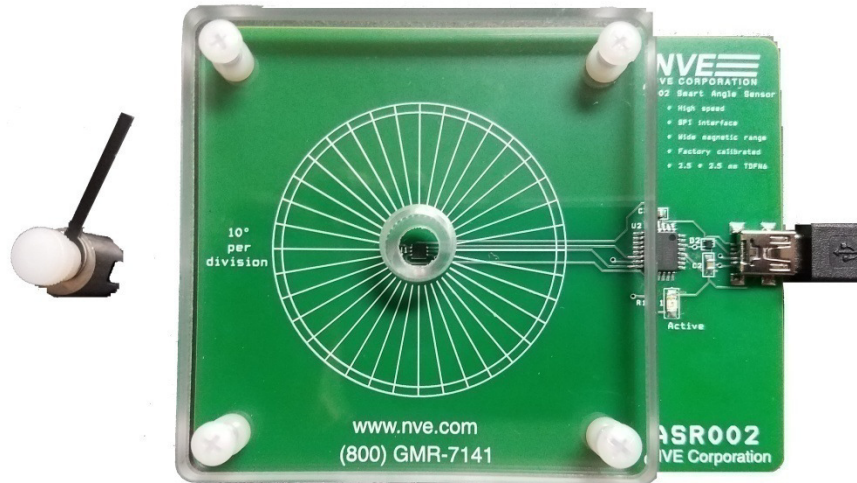
---

```
/******  
Continuously read the angle from an NVE ASR002 Smart Angle Sensor  
Arduino Uno connections: pin 10=SS; pin 11=MOSI; pin 12=MISO; pin 13=SCLK  
*****/  
  
#include <SPI.h>  
int angle;  
  
void setup() {  
  pinMode(10, OUTPUT); //Pin 10 = Sensor SS  
  SPI.begin ();  
  
  //Set clock rate at 2.5 MHz; MSB first, and Mode 0  
  SPI.beginTransaction(SPISettings(2500000, MSBFIRST, SPI_MODE0));  
  digitalWrite(10, LOW); //Enable sensor  
}  
  
void loop() {  
  angle = (SPI.transfer (0))<<8; //Send 0 for address angle; receive angle MSB  
  delayMicroseconds (3); //Allow 3 us between address bytes  
  angle |= SPI.transfer (0); //2nd address byte (0 for read); receive angle LSB  
  delayMicroseconds (10); //Allow 10 us for next data  
}
```

**Evaluation Kit**

**Smart Angle Sensor Evaluation Kit**

This simple board includes an ASR002-10E Smart Angle Sensor, a microcontroller that interfaces to the Sensor via SPI, and to a PC via USB. The kit includes a diametrical magnet and fixturing. A PC-based user interface provides two-way communication with the sensor to display the sensor outputs and change the sensor's parameters.



**Figure 12. AG954-07E: Smart Angle Sensor Evaluation Kit.**

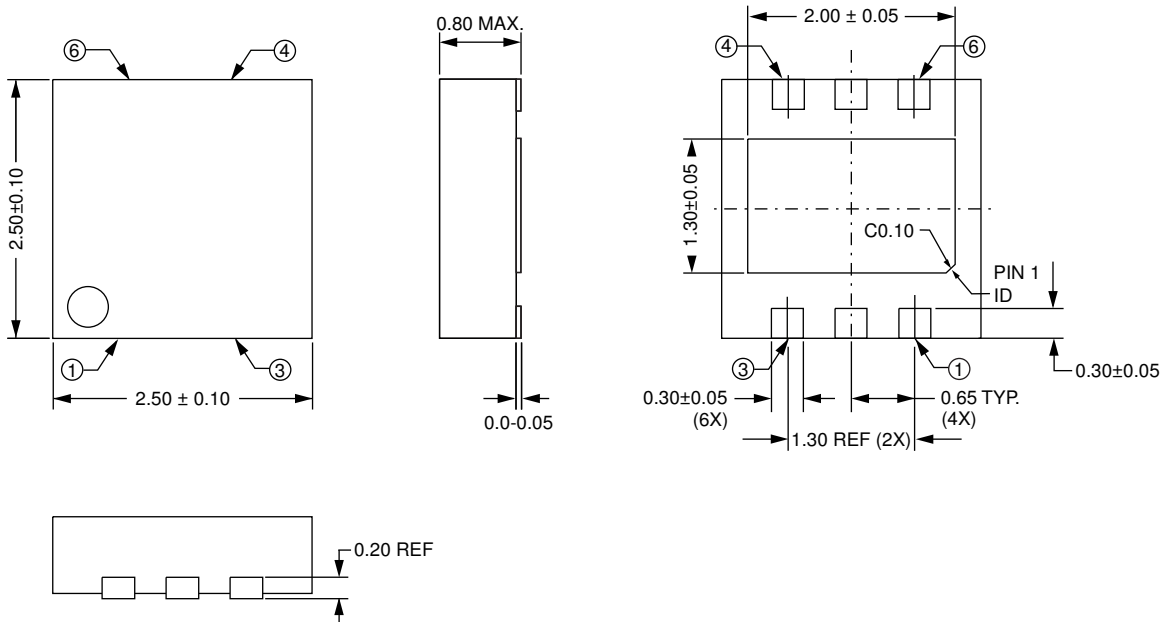
**Bare Circuit Board**

The AG035-06 bare circuit board provides easy connections to TDFN6 devices such as the ASR002-10E:



**Figure 13. AG035-06 bare circuit board**  
1.57" x 0.25" (40mm x 6 mm) TDFN6  
(actual size).

**2.5 x 2.5 mm TDFN6 Package**



Pad	Symbol	Description
1	GND	Ground/ $V_{SS}$
2	SCLK	SPI Clock Input
3	MISO	Sensor SPI Data Output
4	VDD	Power Supply (bypass with a $0.1\mu\text{F}$ capacitor)
5	MOSI	Sensor SPI Data Input
6	SS	Sensor Select Input (low to select)

**Notes:**

- Dimensions in inches (millimeters).
- Soldering profile per JEDEC J-STD-020C, MSL 1.





**Ordering Information**

---

# ASR002- 10E TR13

**Product Family**

ASR = Smart Angle Sensors

**Base Part Number**

002 = High speed, medium accuracy

**Field Range Identifier**

Blank = General Purpose (60 to 200 Oe)

**Part Package**

10E = RoHS-Compliant 2.5 x 2.5 mm TDFN Package

**Bulk Packaging**

TR13 = 13" Tape and Reel Package

## Revision History

---

### **SB-00-081-A**

Jan. 2019

#### **Change**

- Expanded and updated SPI timing specifications.
- Added detailed SPI timing diagrams.
- Tightened typ. supply current specification to 4 mA.
- Revised minimum operating field to 60 Oe.
- Added sensor direction output and hysteresis parameter.
- Added raw Sin and Cos vector outputs.
- Added illustrative microcontroller code.
- Finalized pinout.
- Added evaluation kit and board.
- Dropped customer calibration capability (unnecessary).
- Various typographic corrections.
- “Rev. A” release.

### **SB-00-081-PRELIM**

Oct. 2018

#### **Change**

- Preliminary release.

### Datasheet Limitations

The information and data provided in datasheets shall define the specification of the product as agreed between NVE and its customer, unless NVE and customer have explicitly agreed otherwise in writing. All specifications are based on NVE test protocols. In no event however, shall an agreement be valid in which the NVE product is deemed to offer functions and qualities beyond those described in the datasheet.

### Limited Warranty and Liability

Information in this document is believed to be accurate and reliable. However, NVE does not give any representations or warranties, expressed or implied, as to the accuracy or completeness of such information and shall have no liability for the consequences of use of such information.

In no event shall NVE be liable for any indirect, incidental, punitive, special or consequential damages (including, without limitation, lost profits, lost savings, business interruption, costs related to the removal or replacement of any products or rework charges) whether or not such damages are based on tort (including negligence), warranty, breach of contract or any other legal theory.

### Right to Make Changes

NVE reserves the right to make changes to information published in this document including, without limitation, specifications and product descriptions at any time and without notice. This document supersedes and replaces all information supplied prior to its publication.

### Use in Life-Critical or Safety-Critical Applications

Unless NVE and a customer explicitly agree otherwise in writing, NVE products are not designed, authorized or warranted to be suitable for use in life support, life-critical or safety-critical devices or equipment. NVE accepts no liability for inclusion or use of NVE products in such applications and such inclusion or use is at the customer's own risk. Should the customer use NVE products for such application whether authorized by NVE or not, the customer shall indemnify and hold NVE harmless against all claims and damages.

### Applications

Applications described in this datasheet are illustrative only. NVE makes no representation or warranty that such applications will be suitable for the specified use without further testing or modification.

Customers are responsible for the design and operation of their applications and products using NVE products, and NVE accepts no liability for any assistance with applications or customer product design. It is customer's sole responsibility to determine whether the NVE product is suitable and fit for the customer's applications and products planned, as well as for the planned application and use of customer's third party customers. Customers should provide appropriate design and operating safeguards to minimize the risks associated with their applications and products.

NVE does not accept any liability related to any default, damage, costs or problem which is based on any weakness or default in the customer's applications or products, or the application or use by customer's third party customers. The customer is responsible for all necessary testing for the customer's applications and products using NVE products in order to avoid a default of the applications and the products or of the application or use by customer's third party customers. NVE accepts no liability in this respect.

### Limiting Values

Stress above one or more limiting values (as defined in the Absolute Maximum Ratings System of IEC 60134) will cause permanent damage to the device. Limiting values are stress ratings only and operation of the device at these or any other conditions above those given in the recommended operating conditions of the datasheet is not warranted. Constant or repeated exposure to limiting values will permanently and irreversibly affect the quality and reliability of the device.

### Terms and Conditions of Sale

In case an individual agreement is concluded only the terms and conditions of the respective agreement shall apply. NVE hereby expressly objects to applying the customer's general terms and conditions with regard to the purchase of NVE products by customer.

### No Offer to Sell or License

Nothing in this document may be interpreted or construed as an offer to sell products that is open for acceptance or the grant, conveyance or implication of any license under any copyrights, patents or other industrial or intellectual property rights.

### Export Control

This document as well as the items described herein may be subject to export control regulations. Export might require a prior authorization from national authorities.

### Automotive Qualified Products

Unless the datasheet expressly states that a specific NVE product is automotive qualified, the product is not suitable for automotive use. It is neither qualified nor tested in accordance with automotive testing or application requirements. NVE accepts no liability for inclusion or use of non-automotive qualified products in automotive equipment or applications.

In the event that customer uses the product for design-in and use in automotive applications to automotive specifications and standards, customer (a) shall use the product without NVE's warranty of the product for such automotive applications, use and specifications, and (b) whenever customer uses the product for automotive applications beyond NVE's specifications such use shall be solely at customer's own risk, and (c) customer fully indemnifies NVE for any liability, damages or failed product claims resulting from customer design and use of the product for automotive applications beyond NVE's standard warranty and NVE's product specifications.

An ISO 9001 Certified Company

NVE Corporation  
11409 Valley View Road  
Eden Prairie, MN 55344-3617 USA  
Telephone: (952) 829-9217  
[www.nve.com](http://www.nve.com)  
e-mail: [sensor-info@nve.com](mailto:sensor-info@nve.com)

©NVE Corporation  
All rights are reserved. Reproduction in whole or in part is prohibited without the prior written consent of the copyright owner.

SB-00-081\_ASR002-10\_RevA

*Jan. 2019*